

ER-530T

Video Rhino-laryngo Endoscope



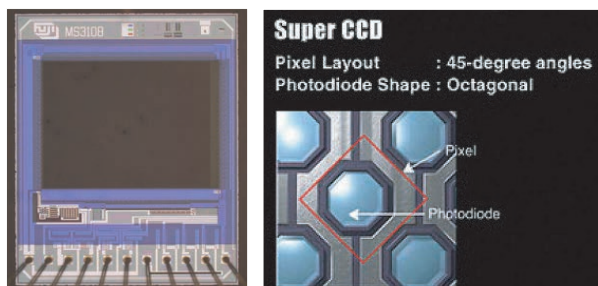
- High quality images
- Larger and brighter images
- Support of procedure accuracy

ER-530T - Realizing enhanced observation, diagnosis and treatment.

High quality images

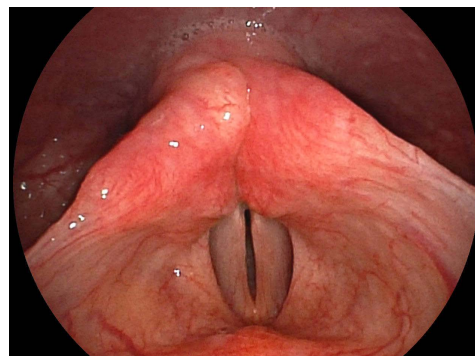
High resolution Super CCD technology is used in this new Rhino-laryngo endoscope.

This increase in image quality can help to enhance observation.



Larger and brighter images

The image on the monitor can be displayed 1.4 times larger than conventional models, and 140° field of view can be obtained. The new optical system allows brighter images to be produced.

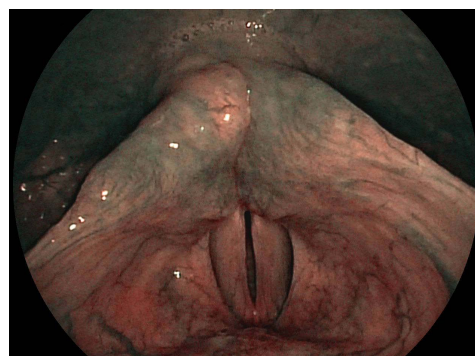


Support of procedure accuracy

Used in combination with VP-4450HD and FICE (=Flexible spectral Imaging Color Enhancement),* it provides better contrast for vascular and surface patterns in close focus, emphasizing the structure of tissue aspects and vessels.

These features help to increase the accuracy of observation, diagnosis and treatment.

* Fujifilm proprietary image processing technology



Specification

Viewing direction	0° (Forward viewing)
Field of view	140°
Observation range (mm)	2-50 mm
Distal end diameter (mm)	5.4 mm
Flexible portion diameter (mm)	4.9 mm
Bending capability	UP 130° / DOWN 130°
Working length (mm)	400 mm
Total length (mm)	670 mm
Forceps channel diameter	2.0 mm

