

# ER-530S2

## Video Rhino-laryngo Endoscope



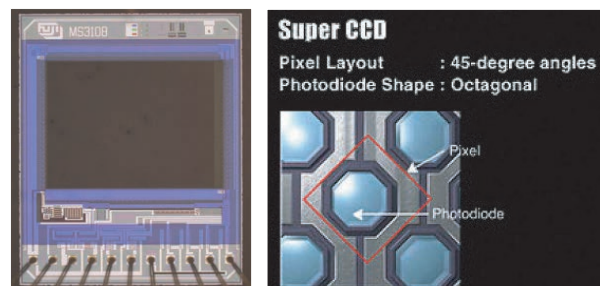
- High quality images
- Larger and brighter images
- Support of procedure accuracy

## ER-530S2 - Realizing enhanced observation and diagnosis.

### High quality images

High resolution Super CCD technology is used in this new Rhino-laryngo endoscope.

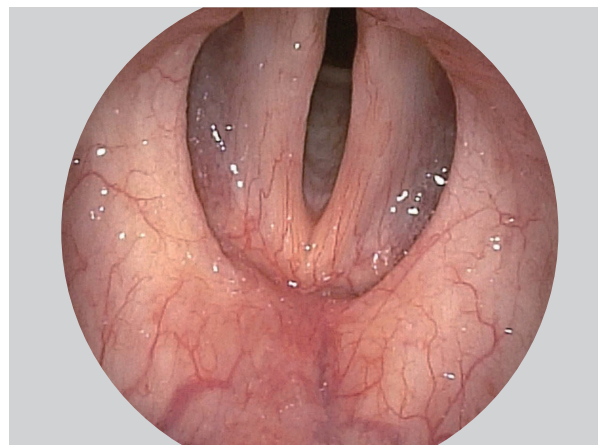
This increase in image quality can help to enhance observation.



### Larger and brighter images

The image on the monitor can be displayed 1.2 times larger than conventional models.

The new optical system allows brighter images to be produced.



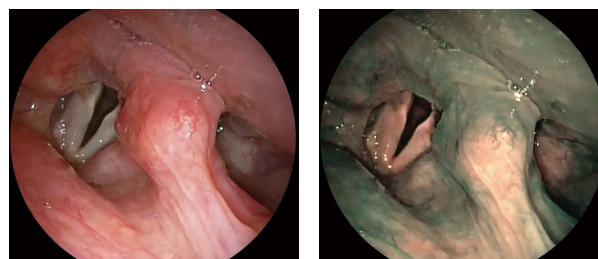
### Support of procedure accuracy

The smaller size of the LG lens has allowed the tip diameter to be reduced to just 2.9 mm.

The diameter of the flexible part is also just 3.2 mm, meaning that ease of insertion has been improved while maintaining the capability of high resolution observation.

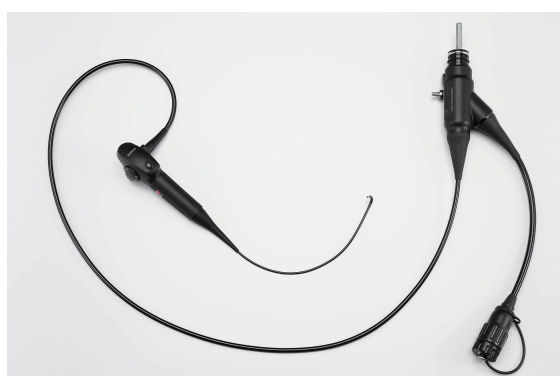
Used in combination with VP-4450HD and FICE (=Flexible spectral Imaging Color Enhancement),\* it provides better contrast for vascular and surface patterns emphasizing the structure of tissue aspects and vessels. These features help to increase the accuracy of observation and diagnosis.

\* Fujifilm proprietary image processing technology



Normal

FICE



#### Specification

Viewing direction	0° (Forward viewing)
Field of view	90°
Observation range (mm)	3-50 mm
Distal end diameter (mm)	2.9 mm
Flexible portion diameter (mm)	3.2 mm
Bending capability	UP 130° / DOWN 130°
Working length (mm)	300 mm
Total length (mm)	553 mm

